



EMV

installation procedure

STEP BY STEP GUIDE TO INSTALLING DAWSON EXCAVATOR MOUNTED VIBRATORY HAMMER

DAWSON CONSTRUCTION PLANT
CHESNEY WOLD,
BLEAK HALL,
MILTON KEYNES,
MK6 1NE
ENGLAND
TEL. +44 1908 240300
FAX. +44 1908 240222
EMAIL. DAWSON@DCPUK.COM



www.dcpuk.com

unloading the emv



01



02



03



04



05



06

unloading the emv



07



08



09

remove the quick-hitch bracket



01



02



03



04



05



06

strap down the bucket ram



01



02



03



04



05

connect drain hoses

(using breaker as return to tank) 1/2" hose



01



02



03



04



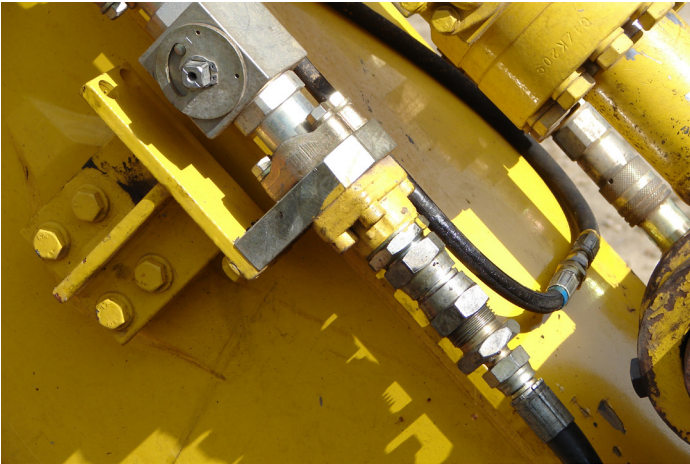
05



06

connect drain hoses

(using breaker as return to tank) 1/2" hose



07



08

connect pressure hoses



01



02



03



04



05



06

connect pressure hoses



07



08



09



10

JOIN BUCKET HOSES TOGETHER, TO STOP AIR/DIRT GETTING INTO RAM

tidy-up lose hoses



01



02

connect emv pin & bushes



01



02



03



04



05



06

connect emv pin & bushes



01



02

test equipment





D.C.P. RESERVES THE RIGHT TO DISCONTINUE EQUIPMENT AT ANY TIME, OR CHANGE SPECIFICATIONS OR DESIGNS WITHOUT NOTICE OR INCURRING OBLIGATIONS

emv installation procedure

DAWSON CONSTRUCTION PLANT
CHESNEY WOLD,
BLEAK HALL,
MILTON KEYNES,
MK6 1NE
ENGLAND
TEL. +44 1908 240300
FAX. +44 1908 240222
EMAIL. DAWSON@DCPUK.COM

